

INTRODUCING THE NEW

# LAND CRUISER



I AM WHAT I AM





LAND CRUISER FJ 4x4 6AT VX

## BUILT TO BACK UP ITS BOLDNESS

- High ground clearance for confident driving on and off road
- Selectable part-time 4-wheel drive for when the terrain demands more
- A robust 2.7ℓ engine built for reliability and capability
- Rear differential lock for added traction when conditions get tough

With its angular shape and unmistakable presence, the Land Cruiser FJ creates space for whoever you want to be, whenever you want to be it. There's no one else like you. And there's nothing else like the Land Cruiser FJ.

I AM  
BOLDLY UNIQUE

**You don't fade into the background, you arrive.**

And so does the all-new Land Cruiser FJ. Iconic by design. Fearless by nature. A car that's unapologetically itself, just like you. Honed by decades of toughness and forged from timeless capability, the Land Cruiser FJ is built for those who show up exactly as they are.



LAND CRUISER FJ 4x4 6AT VX

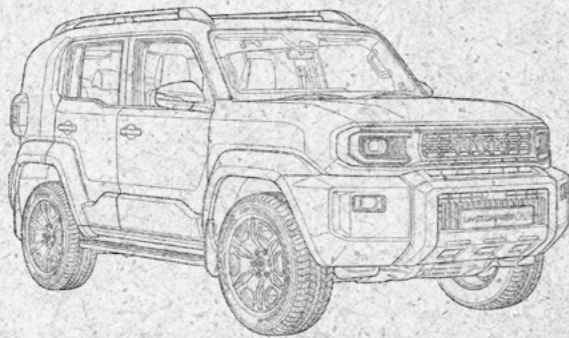
# I AM

## BUILT FOR VARIETY

Owning who you are means choosing how you show up. That's why the Land Cruiser FJ gives you more than one way to express yourself through considered design, capable performance and a range that lets you define confidence on your own terms.

### CHOOSE THE FJ THAT FITS WHO YOU ARE

- FJ 2.7 4x4 6AT GX
- FJ 4x4 6AT VX



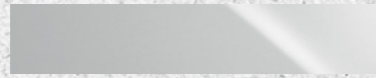
### AVAILABLE COLOURS



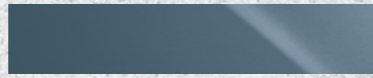
218 Attitude Black



6X1 Oxide Bronze



089 Platinum White Pearl



8X0 Calcite Blue



1M2 Ash

# I AM

## EXPRESSIVE

Being expressive isn't about standing out for the sake of it, it's about driving a vehicle that's unmistakably you.



LAND CRUISER FJ 4x4 6AT VX

# I AM UNSTOPPABLE

You make a bold statement whenever you show up, and you need a bold vehicle to back it up. The Land Cruiser FJ moves with the same certainty. Whatever your destination, reliability is never optional.



LAND CRUISER FJ 4x4 6AT VX



LAND CRUISER FJ 4x4 6AT VX

## BUILT FOR REAL-WORLD TRACTION AND CONTROL

- 2.7ℓ, 4-cylinder petrol engine producing 122 kW @ 5200 r/min and 245 Nm @ 4000 r/min
- 6-speed automatic transmission designed for low-speed control and efficient cruising
- Selectable part-time 4-wheel drive with high/low range transfer case
- Rear differential lock for added traction when grip is limited

No path? No problem. Minimal front and rear overhangs are in the FJ's DNA, letting you attack slopes others choose to avoid.

Control, just the way you like it.

# IAMM ADVENTUROUS



LAND CRUISER FJ 4x4 6AT VX

Subtlety isn't in your nature, and the Land Cruiser FJ is just as hard to miss. Uncompromising and instantly recognisable, the Land Cruiser FJ makes a statement at every angle.

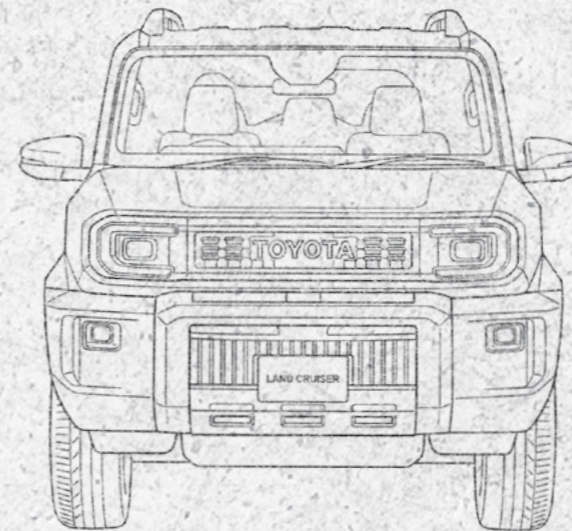
Its bold, square silhouette is an unmistakable evolution of the iconic Land Cruiser shape: compact in size, commanding in presence and bold in attitude.

Designed to move seamlessly between city streets and open horizons, it's presence with purpose.

## PURPOSE-BUILT EXTERIOR FEATURES

- Short wheelbase for sharper manoeuvrability on and off road
- Minimal front and rear overhangs to approve approach and departure angles
- 17-inch alloy wheels on GX models for confident everyday capability
- 18-inch alloy wheels on VX models for added presence and elevated style
- Commandingly sculpted front and rear bumpers that frame its bold stance
- Rear-mounted external spare wheel that's a signature, not an accessory

Because being iconic isn't about standing out on purpose, it's about being impossible to mistake for anything else.



# STYLISH

Tough where it needs to be and refined where it counts, the all-new Land Cruiser FJ balances stripped back elegance with adventure-ready tech to match your style.

## INTERIOR DESIGNED AROUND CONTROL AND COMFORT

With the Land Cruiser FJ true style isn't excess, it's about feeling at home, wherever the journey takes you.



- Panoramic driving view that enhances visibility and confidence
- Wraparound instrument panel that places everything within easy reach
- 8-inch touchscreen infotainment display for seamless connectivity
- 7-inch multi-info driver display delivering clear, essential information at a glance
- 60/40 split-folding rear seats for adaptable space and everyday practicality
- Tactile inputs and multiple grab handles to support movement
- Durable cloth upholstery on GX models for practical comfort
- Sleek synthetic leather trim on VX models for an elevated finish



# SEEK AND ASSURE

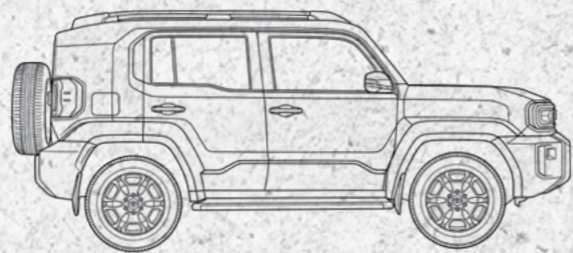
Fearless doesn't mean careless, it means knowing you're out of harm's way wherever the road takes you. The Land Cruiser FJ is designed to quietly look out for you, giving you the confidence to stay focused on the road, not the risk.

## COMPREHENSIVE SAFETY FEATURES\*

- Toyota's Safety Sense 3.0, standard across the range
- Pre-collision system with autonomous emergency braking
- Adaptive cruise control operating across all speed ranges
- Lane Departure Alert to warn when you drift from your chosen lane
- Blind Spot Monitoring to detect what you can't always see
- Adaptive High Beam that adjusts automatically to oncoming traffic

\*Available on VX models.

## PEACE OF MIND COMES STANDARD



- Seven airbags for all-round occupant protection
- Bird's Eye Camera providing a clearer view in tight or unfamiliar spaces
- Parking Support Brake to help prevent low-speed contact with unseen objects



LAND CRUISER FJ 4x4 6AT VX

True confidence isn't loud, it's the calm assurance that lets you move freely, knowing you're in safe hands.

I AM  
R E A D Y

In the all-new Land Cruiser FJ, it's not just about reaching your destination, it's about doing it your way. Visit your nearest dealership today to find the perfect FJ that fits your lifestyle and take the first step into your next adventure in style.



LAND CRUISER FJ 4x4 6AT VX



LAND CRUISER FJ 4x4 6AT VX



### TOYOTA FINANCIAL SERVICES

There is no 'one-size-fits-all' when it comes to vehicle finance and insurance, there is only you. With fast, flexible and convenient services we will structure the perfect Land Cruiser FJ deal for you.

At Toyota Financial Services, we believe that purchasing your Toyota should be as enjoyable as driving it. Toyota Financial Services is the fast, flexible and convenient means of financing your Land Cruiser FJ. We have created a range of finance products that suit both private and business customers, easily accessible through your local Toyota dealer. We take the hassle out of arranging finance.

Toyota Financial Services (South Africa) Ltd is an authorised Financial Services (FSP No. 7454) and Registered Credit Provider (NCRCP62).

For comprehensive information about products offered by Toyota Financial Services, [www.toyota.co.za/payment-options/toyota-financial-services](http://www.toyota.co.za/payment-options/toyota-financial-services)

The information contained within or made available on any Toyota platform or note including but not limited to, this brochure, is provided for information purposes only. While we make reasonable efforts to update the information on our platform/s, Toyota Motor Corporation of Japan, and Toyota South Africa Motors (Pty) Ltd makes no representations, warranties, or guarantees, whether express or implied, that the content is accurate, complete or up to date, and all information contained herein is subject to change without notice.

Vehicle specifications may vary depending on the model, trim level, and market. Colours depicted on print and web material may not match the actual vehicle colour. Fuel consumption figures are estimates based on standardised testing conditions and actual results may vary due to (but not limited to) driving style, vehicle loading, tyres, wind, traffic, and accessories. All dimensions, capacities, and performance figures are approximate. Some features/options may be optional or only available on certain models/trim levels. Images and illustrations are for illustrative purposes only and may not reflect the actual vehicle.

Your use of, or reliance on, any information or contents herein is entirely at your own risk. Toyota Motor Corporation of Japan and Toyota South Africa Motors (Pty) Ltd (including its owners, agents, consultants, employees, and any affiliated person(s)) are not responsible for any loss or damages related to your use of, reliance on, or understanding of any information or contents on this or any other Toyota platform. This includes, without limitation, any direct, indirect, special, incidental, consequential, or punitive damages in terms of any contract, delict (breach of a duty of care) or law.

Furthermore, Toyota Motor Corporation of Japan and Toyota South Africa Motors (Pty) Ltd do not guarantee the uninterrupted or error-free operation of any platform or the availability of content, and are not liable for any interruptions, errors, or damages caused by any technical issues or limitations of these platforms, including but not limited to, server downtime, software malfunctions, or internet connectivity issues. Toyota South Africa Motors' rights remain reserved.

# My TOYOTA

GET CONNECTED WITH

IN-CAR WI-FI, ROADSIDE ASSISTANCE AND MUCH MORE



#### IN-CAR WI-FI\*

Connect to Wi-Fi



#### GPS LOCATOR

Always know your vehicle's GPS location



#### LOGBOOK

Have access to a digital logbook



#### DRIVER NOTIFICATIONS

Important reminders like licence renewal



#### BATTERY HEALTH CHECK

Check your battery health



#### SERVICE BOOKING

Manage your services



#### ROADSIDE ASSISTANCE

Get real-time roadside assistance



#### DRIVER RATING

Receive a driver rating



#### FLEET MANAGEMENT

Monitor your fleet



#### LICENCE RENEWAL

Renew from the App



Toyota vehicles are known for their Quality, Durability and Reliability. Keeping your Toyota Genuine means no compromises in terms of safety, performance and resale value. The range of Genuine Products and Approved Services will ensure complete peace of mind throughout the ownership journey and beyond. For more information on how to Keep Your Toyota Genuine visit [www.toyota.co.za/owners/genuine-parts](http://www.toyota.co.za/owners/genuine-parts)

#### TOYOTA GENUINE PRODUCTS

For guaranteed fit and function, **Genuine Parts** are essential in maintaining the safety and reliability of your vehicle. They also comply with all safety, regulatory and environmental requirements, making it the obvious choice. The same exacting precision applies to **Toyota Accessories**, developed by engineers with extensive knowledge on vehicle integration - you can enhance the appeal and functionality of your Land Cruiser FJ without compromising its safety features or warranty. Warranties are about peace of mind, and the **Genuine Unlimited Warranty** is designed to provide superior cover (up to 10 years, unlimited mileage) and a seamless claims process thanks to full integration with Toyota systems. The **Genuine Extended Service Plan** also enjoys exclusive approval by Toyota SA and provides flexible extension options up to 10 years or 300 000 km to suit your period of ownership. Paying today's rates for tomorrow's maintenance is a sensible way to protect the resale value of your Land Cruiser FJ by means of a full service history.

#### TOYOTA APPROVED SERVICES

Specialised vehicle maintenance requires first-class facilities, advanced equipment and expert knowledge. **Toyota Quality Service and Value Service** not only promise accurate diagnosis and repair, but also a philosophy of building trust through a genuine concern for the needs of our customers. To complement the extensive network of Toyota dealers, we have a vast number of **Accredited Body and Paint Repairers**, selected on stringent criteria to ensure outstanding workmanship and customer service. You can maintain your vehicle's pristine condition without compromising its warranty thanks to the exclusive use of Genuine Parts by our Accredited Repairers. Offering 24-hour access to a full complement of assistance and recovery benefits, **Toyota Roadside Assistance** provides the peace of mind that competent support is only a phone call away.

**AND MORE** - The above features are not all; there are loads of other features available to further enhance driver and guest safety, convenience and comfort; and plenty more to come to make your drive experience better and better with every kilometre.



DOWNLOAD THE **MyTOYOTA** APP AND GET CONNECTED TODAY

#### FIND OUT MORE AT

[www.toyota.co.za/services/my-toyota-app](http://www.toyota.co.za/services/my-toyota-app)

\*25GB FREE DATA ONCE-OFF UPON ACTIVATION. Ts & Cs APPLY. AVAILABLE IN SOUTH AFRICA ONLY.

# TOYOTA GENUINE MEANS

✓ UNCOMPROMISED SAFETY

✓ GUARANTEED QUALITY

✓ PEACE OF MIND

# TOYOTA ENVIRONMENTAL CHALLENGE 2050



At Toyota, creating technologically advanced vehicles isn't our only priority; we're committed to lowering our environmental impact throughout our entire production process. How? By setting ourselves six challenges that will see us reach a truly world-changing goal: a positive environmental impact by 2050.



ZERO CO<sub>2</sub>

## CHALLENGE 1

### NEW VEHICLE ZERO CO<sub>2</sub> EMISSIONS CHALLENGE

By owning a Toyota you would be contributing to the reduction of vehicle CO<sub>2</sub> emissions by 90% in 2050 as opposed to 2010. You will help us promote the development of next-generation vehicles and further accelerate the spread of these vehicles.



ZERO CO<sub>2</sub>

## CHALLENGE 2

### LIFE CYCLE ZERO CO<sub>2</sub> EMISSIONS CHALLENGE

You are lending a helping hand to Toyota's efforts to reduce to zero not only CO<sub>2</sub> emissions produced in travelling and manufacturing, but all CO<sub>2</sub> emissions including the process of materials production, disposal and recycling of vehicles.



ZERO CO<sub>2</sub>

## CHALLENGE 3

### PLANT ZERO CO<sub>2</sub> EMISSIONS CHALLENGE

You uphold the two main pillars of our strategy to achieve zero CO<sub>2</sub> emissions at our plants which are:

1. Developing and introducing low-CO<sub>2</sub> technologies with ongoing kaizen.
2. Adopting renewable energy sources and utilizing hydrogen energy.

The message is clear – Toyota Motor Corporation (TMC) wholeheartedly supports the Paris Agreement and accepts the challenge to achieve carbon neutrality by 2050. The Paris Agreement is a legally-binding international treaty on climate change and is aimed at reducing the emission of gases that contribute to global warming. While this treaty was only adopted in 2015, Toyota has been innovating and investing in technology to reduce emissions and achieve carbon neutrality for well over 30 years. Toyota has also led the way with more electrified vehicles on the road than any other automaker.

TOWARDS  
CARBON  
NEUTRAL



THE TOYOTA LAND CRUISER FJ HAS BEEN MANUFACTURED TO MINIMISE ITS CARBON FOOTPRINT.

Guided by the goals of the Toyota Environmental Challenge 2050, as little impact as possible is made on the environment during each step of the process. From design to manufacturing, to end-of-life recycling programmes, our planet always comes first. This is because the ultimate long-term goal for Toyota is to make all our vehicles as environmentally friendly as possible. With this in mind, the entire Land Cruiser FJ range has been designed to have very low CO<sub>2</sub> emissions.



## CHALLENGE 4

### CHALLENGE OF MINIMISING AND OPTIMISING WATER USAGE

In automobile manufacturing, we use water in painting, forging and other processes. Therefore, even a small reduction of its impact on the water environments is important. We have two measures to achieve this, comprehensive reduction of the amount of water used and comprehensive purification of the water and returning it to the earth.



## CHALLENGE 5

### CHALLENGE OF ESTABLISHING A RECYCLING-BASED SOCIETY AND SYSTEMS

You have contributed to our 40 years on the challenge of resource recycling. Going forward, by rolling out to the world the technology and systems evolved in Japan, we will all continue working on the challenge of establishing a recycling-based society.



## CHALLENGE 6

### CHALLENGE OF ESTABLISHING A FUTURE SOCIETY IN HARMONY WITH NATURE

Here at Toyota we have engaged in planting trees at our plants and environmental conservation activities in our surrounding areas. To establish a society where humans and nature coexist in harmony, we are promoting several activities to connect regions, the world and the future.

